



**IRISH STEEL**  
AWARDS **2025**

in association with

**RFL**  
STEELS LIMITED

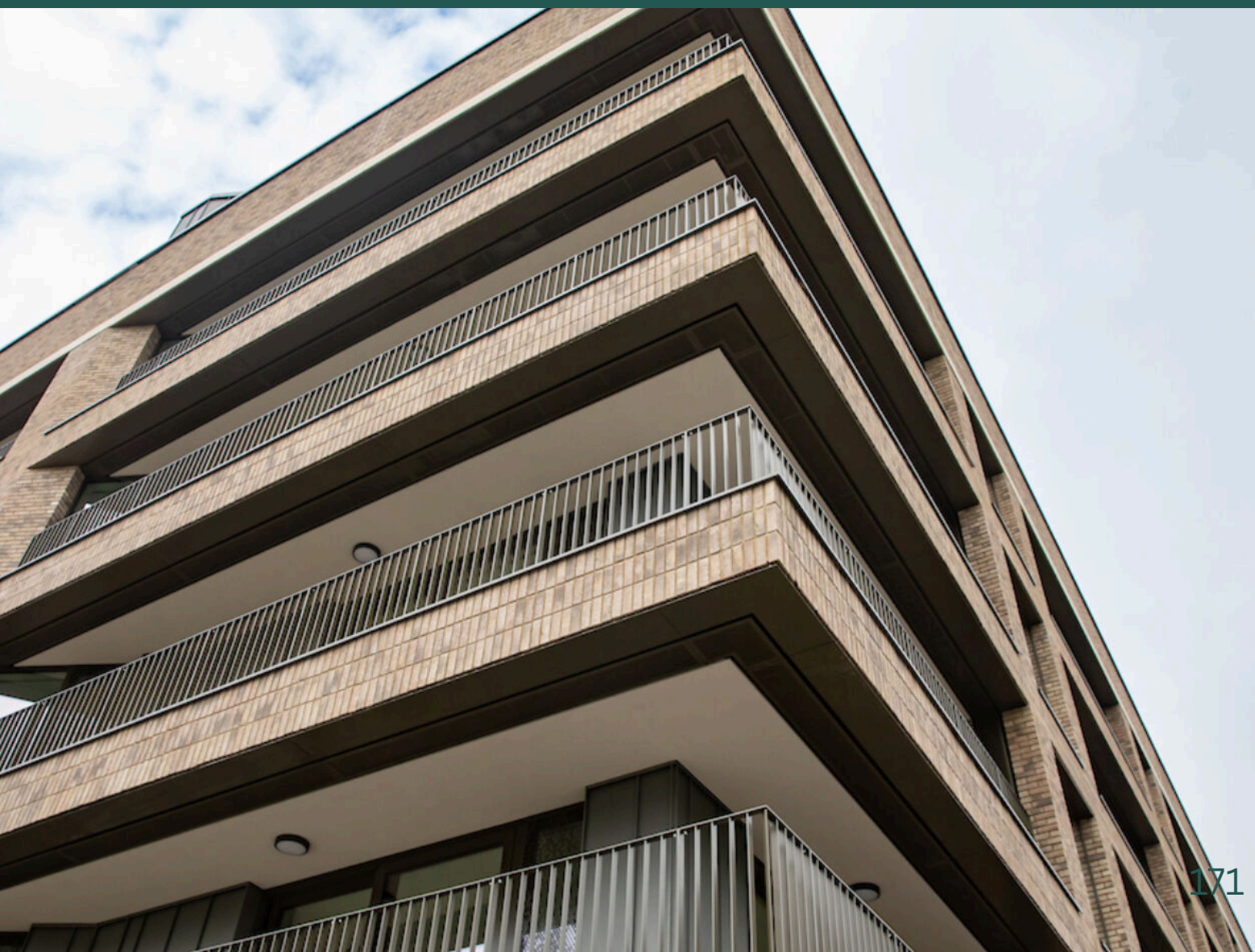
**Shortlisted Finalist // Voting ID: #6593**

Finished Projects

Architectural Metalwork – Balconies

**Vision Fabrications Limited –**

Balconies, Woking Canalside, *England*





Voting ID: #6593 | Architectural Metalwork – Balconies & Façades

## Balconies, Woking Canalside *England*



Fabrications  
Limited

### Project Story:

Woking Canalside is a transformative project by ThamesWey, redefining urban regeneration in Woking, Surrey.

Vision Fabrications Limited was appointed to design, manufacture, and install all architectural metalwork across the development's three key phases: Purple, Red, and Yellow.

Over the past number of years, Vision has successfully delivered on this project, which involved the fabrication and installation of thousands of metres of bespoke steel balcony railings and balustrades. Each element was carefully coordinated and interfaced with both the facade and concrete subcontractors.

The railings were specifically designed to allow for manual erection on site, using individual supporting posts with adjoining railing panels bolted directly to them – a solution that enabled efficient installation while maintaining a clean architectural finish.

#### Design Concept & Architectural Integration

Working in close collaboration with White Ink Architects, Gilbert Ash, and other key stakeholders, Vision Fabrications Limited played a vital role in bringing the project's architectural vision to life. The metalwork was not simply decorative; it was structurally integral, designed to deliver maximum stability with minimal visual interruption.

Due to the varied building types and usage – including residential, retail, healthcare, and civic functions – the metalwork required a blend of prefabricated and site-assembled units. The urban, fully occupied nature of the Woking town centre site posed several challenges. Tight site constraints in a live, urban environment meant limited storage, restricted access, and constant coordination with multiple trades operating simultaneously.



The balconies and facade elements had to be seamlessly integrated with both the brickwork and precast concrete cladding, requiring high levels of precision during both the design and installation phases.

With limited crane time and restricted lifting capacity, a significant portion of the metalwork was manually handled and installed by hand. Despite these constraints, Vision Fabrications ensured that the finished product retained a seamless architectural appearance and maintained clean lines and finishes throughout.

Coordination with other contractors was vital to avoid clashes and ensure safe, phased delivery – requiring proactive planning and flexible working methods. Installation was carried out using a combination of manual handling, hoists, and goods lifts, with the majority of components fitted by hand due to restricted access and site conditions.

### Project Team:

**Lead Architect:** White Ink Architects





Voting ID: #6593 | Architectural Metalwork – Balconies & Façades

## Balconies, Woking Canalside *England*



Fabrications  
Limited

### The Nominee thinks this deserves to win an award because:

Vision Fabrications' contribution to Woking Canalside exemplifies innovation, craftsmanship, and urban impact:

- Technical Achievement: High-performing balcony and facade systems, designed for longevity
- Architectural Contribution: The steelwork plays a defining role in the visual identity of the development
- Collaborative Delivery: Seamless integration with architects, engineers, and contractors led to a consistently high-quality outcome across a multi-year, multi-phase scheme.

To participate in the voting process for all of your favourite projects, click vote now

[Vote Now](#)

