



**IRISH STEEL**  
AWARDS **2025**

*in association with*

**RFL**  
STEELS LIMITED

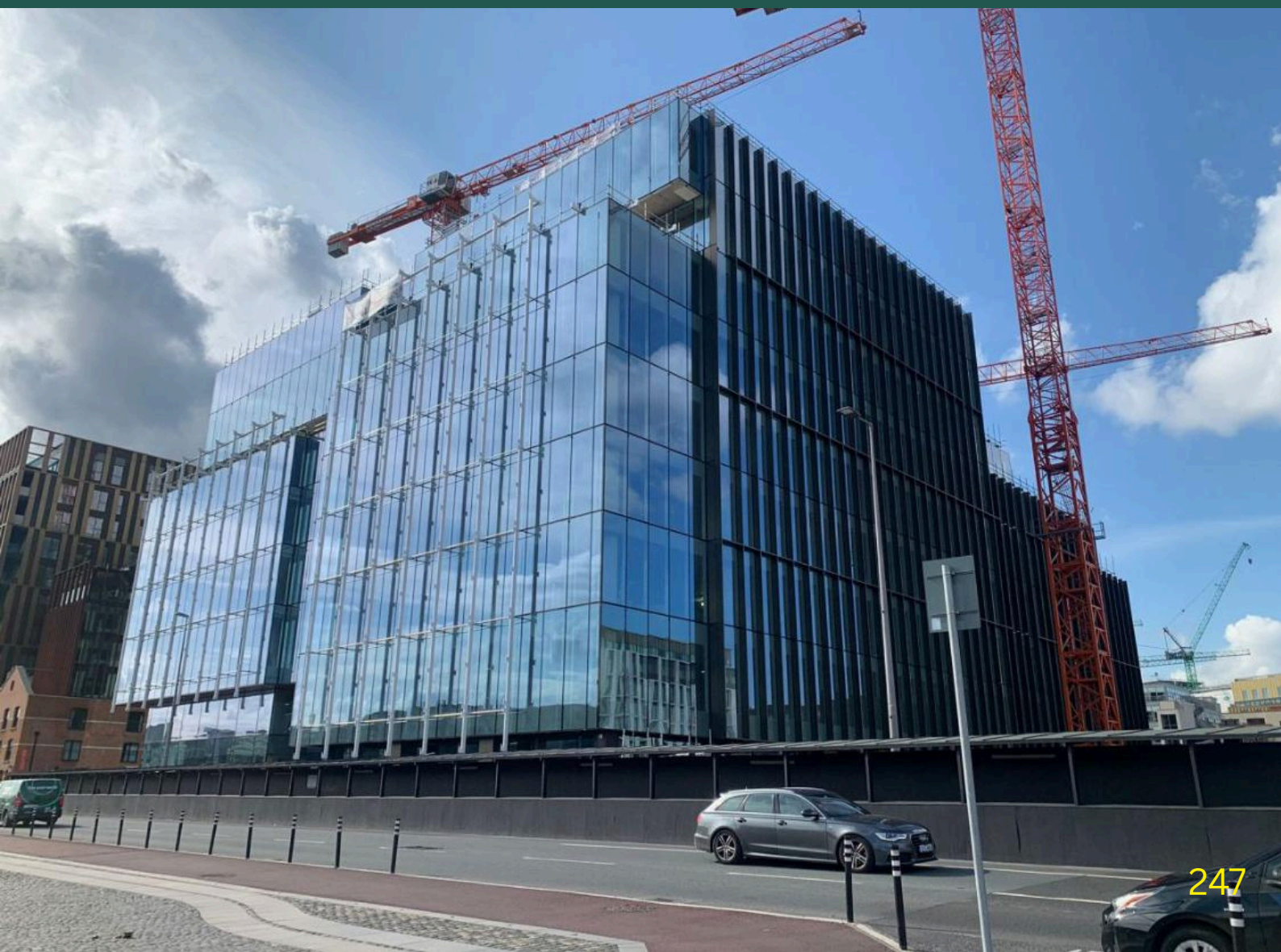
**Shortlisted Finalist | Voting ID: #6595**

Finished Projects

Façade Systems

**Vision Fabrications**

Façade System, St. Georges Quay, Dublin





Voting ID: #6595 | Façade Systems



Fabrications  
Limited

## Façade System

St. Georges Quay, Dublin

### Project Story:

Located on Dublin's waterfront, the St George's Quay which is the new Citi Bank Headquarters in the city stands as a testament to architectural ambition and precision steel fabrication.

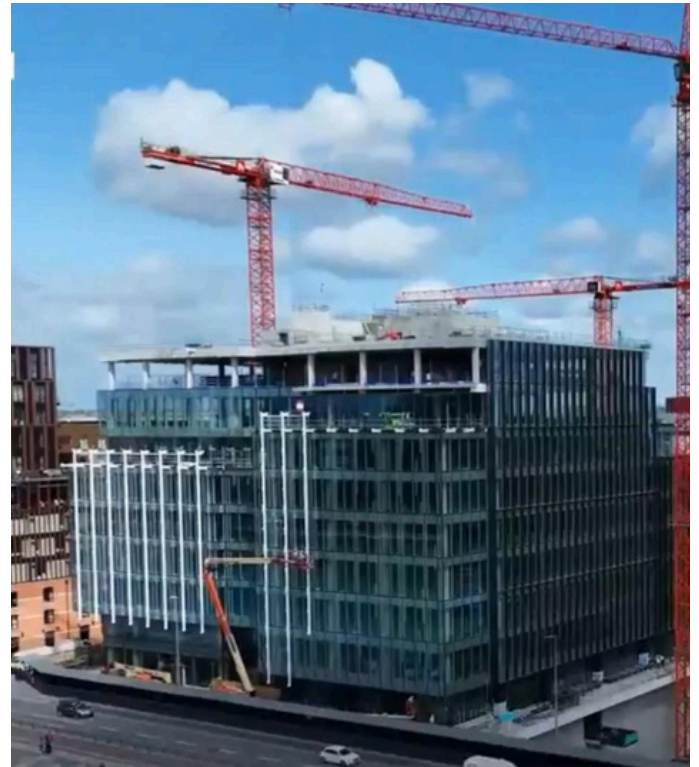
Vision Fabrications was selected as the specialist steelwork fabricator for this complex installation. This project required highly technical structure, demanding exacting standards in fabrication, finishing, and installation.

The building spans 9–10 storeys high. Its unique form called for a structural solution that was both robust and elegant, seamlessly integrating with the façade's glazing systems and support structure.

Every component had to be fabricated and installed to a tolerance of +2mm, demanding rigorous quality control throughout design, production, and on-site erection. The installation also required the application of an N9 paint specification a high-grade industrial finish offering long-term protection while meeting the aesthetic requirements of the project.

We worked in close collaboration with PJ Hegarty, Alucraft, and the façade engineers, ensuring that every detail was reviewed, tested, and verified before arriving on site. Due to the sheer height of the structure (spanning 9–10 storeys), installation had to be executed with meticulous planning.

Installation was carried out alongside the ongoing façade glazing works, requiring coordinated site logistics and shared access.



### Project Team:

**Contractor:** PJ Hegarty

**Specialist Fabricator(s):** Vision Fabrications

**Main Contractor/Installer:** Alucraft

**Client:** Alucraft





Voting ID: #6595 | Façade Systems



Fabrications  
Limited

## Façade System

St. Georges Quay, Dublin

### The Nominee thinks this deserves to win an award because:

The St George's Quay project exemplifies what can be achieved when specialist fabrication, architecture, and engineering work in harmony. Vision Fabrications' contribution stands out for several reasons: Achieving +2mm tolerance on a multi-storey architectural steel structure is a rare and demanding feat, requiring exceptional attention to detail at every stage.

The use of machined polished stainless steel tie bars and a high-spec N9 paint finish, demonstrates a refined approach to industrial materials in an architectural context.

Seamless integration with glazing systems, façade contractors, and the main contractor ensured that structural integrity and visual impact of the project.

To participate in the voting process for all of your favourite projects, click vote now

[Vote Now](#)

